

More4apps

Functional Impact Document

Special Information Wizard

Created By: More4apps

Creation Date: 22 July 2019

Version: 5.0

Version Date: 21 June 2021

Contents

Release 1.6.08 – 21/06/2021	3
Release 1.6.07 – 23/02/2021	3
1.1. Added Effective Date dropdown with the default option of 'Today'	3
Release 1.6.04 – 14/10/2020	4
Release 1.6.02 – 26/05/2020	4
1.2. Updated Logo and new Color Scheme	5
Release 1.5.06 – 29/08/2019	5
1.1. Added 'Logging' and 'Help' buttons to the product ribbon.....	6
1.2. Added checkbox 'Allow Pop-Ups' to the Login form.....	6
1.3. Added 'End to End Trace Unlimited Size' to Debug Upload option under the Setup Ribbon.....	7
1.4. Added New Color Scheme	8

Release 1.6.08 – 21/06/2021

The following includes details of the incremental fixes, functionality changes and/or additions to the Special Information Wizard as part of its development and release process.

Whilst we at More4apps have tried to maintain the same look and user interaction, some functionality has been modified. You can still use your current template worksheets in the new version, provided they were created in version 1.5.02 or later. We have implemented a new color scheme in version 1.6.02 of the Wizard so whilst you **can** use your previous template/worksheets in this version, we recommend that your templates are updated to incorporate the new color scheme.

No functional changes in this version.

Release 1.6.07 – 23/02/2021

The following includes details of the incremental fixes, functionality changes and/or additions to the Special Information Wizard as part of its development and release process.

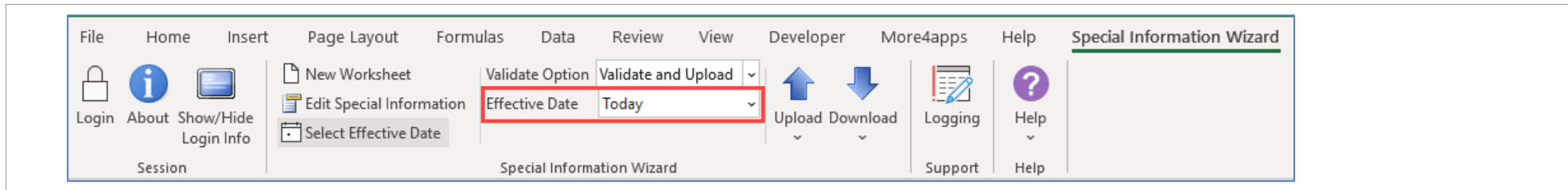
Whilst we at More4apps have tried to maintain the same look and user interaction, some functionality has been modified. You can still use your current template worksheets in the new version, provided they were created in version 1.5.02 or later. We have implemented a new color scheme in version 1.6.02 of the Wizard so whilst you **can** use your previous template/worksheets in this version, we recommend that your templates are updated to incorporate the new color scheme.

1.1. Added Effective Date dropdown with the default option of 'Today'

Version: 1.6.06

Date: 22/01/2021

There are now two date controls available in the wizard. One to select a date from the calendar and one to choose to disregard that selected date and use 'Today' which would always reflect the current date. Having the two options ensure a more robust date-track mechanism.



Release 1.6.04 – 14/10/2020

The following includes details of the incremental fixes, functionality changes and/or additions to the Special Information Wizard as part of its development and release process.

Whilst we at More4apps have tried to maintain the same look and user interaction, some functionality has been modified. You can still use your current template worksheets in the new version, provided they were created in version 1.5.02 or later. We have implemented a new color scheme in the previous version of the Wizard so whilst you **can** use your previous template/worksheets in this version, we recommend that your templates are updated to incorporate the new color scheme.

No functional changes in this version.

Release 1.6.02 – 26/05/2020

The following includes details of the incremental fixes, functionality changes and/or additions to the Special Information Wizard as part of its development and release process.

Whilst we at More4apps have tried to maintain the same look and user interaction, some functionality has been modified. You can still use your current template worksheets in the new version, provided they were created in version 1.5.02 or later. We have implemented a new color scheme in this version of

the Wizard so whilst you **can** use your previous template/worksheets in this version, we recommend that your templates are updated to incorporate the new color scheme.

For information on the changes, please see below:

1.2. Updated Logo and new Color Scheme

Version: 1.6.00

Date: 18/03/2020

New More4apps brand applied. This will have no functional impact on users and is purely a cosmetic update.

Existing templates with previous styles will work with this version, please note, however, the colors may change in these sheets when invoking Wizard functionality. See below for an example:

Special Information Type		Visa Requirements										
Special Information Wizard												
Status	Employee											Country
Upload Status	Rejection Reason	Employee Number	Contingent Work	Person Id	Last Name	First Name	Update Mode	Person Analysis	Start Date	End Date	Segment1	
Default Values												
Loaded							Create	26738	40312		Taiwan	
Loaded							Create	26739	40313		Thailand	
Loaded		408		4430	Hawkins	Harold	Create	26740	40314	40543	China	
Invalid	Country; Invalid	1881		27754	Hoi	Sunyi	Create		40315		Hong KG	
Invalid	Segment3 cannot	1884		27757	Jimenez	Paul	Create		40318		Singapore	
Rejected	Special Information	4		5	Walker	Kenneth	Create		40322		Hong Kong	
Loaded		8		9	Connors	Timothy	Create	27732	24/05/2010		Hong Kong	

Release 1.5.06 – 29/08/2019

The following includes details of the incremental fixes, functionality changes and or additions to the Special Information Wizard as part of its development and release process.

Whilst we at More4Apps have tried to maintain the same look and user interaction, some functionality has been modified. You can still use your current template worksheets in the new version, provided they were created in version 1.5.02 or later. We have implemented a new color scheme in this version of

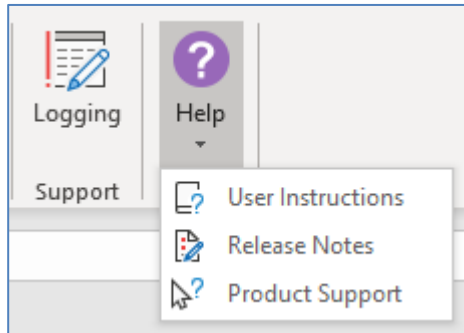
the Wizard so whilst you **can** use your previous template/worksheets in this version, we recommend that your templates are updated to incorporate the new color scheme.

For information on the changes, please see below:

1.1. Added 'Logging' and 'Help' buttons to the product ribbon

Version: 1.5.04

Date: 04/07/2019

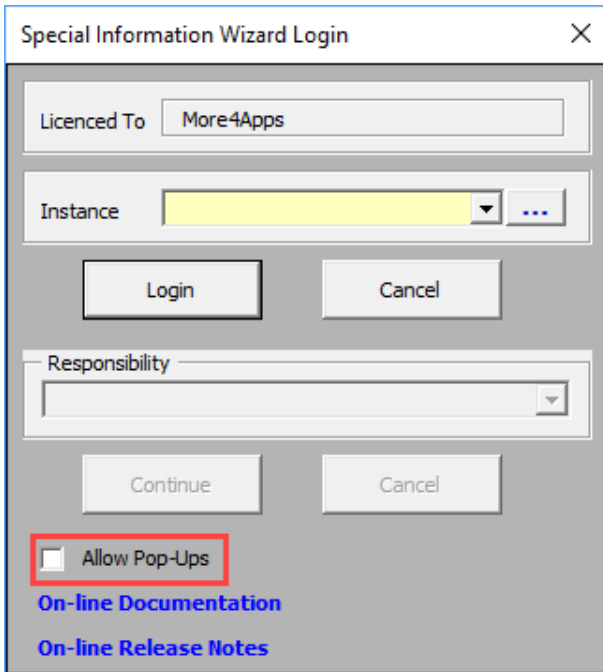


Logging: When you click this button, it will turn on the diagnostics, which will change the button to a grey color. When you want to turn it off just click the button again, the button will change it back to normal and turn off the diagnostics.

Help: This button has three options:

- User Instructions – Link to the More4Apps online User guide for Element Entry Wizard.
- Release Notes – Link to the list of all version releases for the Wizard.
- Product Support – Link to the More4Apps support page where issues/requests can be logged by completing the form details.

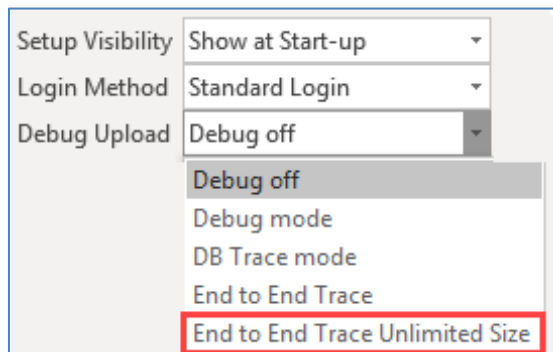
1.2. Added checkbox 'Allow Pop-Ups' to the Login form



This checkbox enables users that require popups as a part of their login process, to log in to their Oracle instance through the Wizard.

Note: If the user does not require any additional popup dialogues as a part of their login process through the Wizard, this checkbox can remain unchecked.

1.3. Added 'End to End Trace Unlimited Size' to Debug Upload option under the Setup Ribbon



This option allows the maximum size of trace files created whilst debugging to become unlimited. This resolves the scenario when trace files are too large that they were being truncated. A message box will be displayed when this option is chosen allowing the user to cancel and not set the trace off:

Note: Please only use this under More4Apps advice. A very large trace file may be created. If you are unsure, please use the 'End to End Trace' option rather than the 'End to End Trace Unlimited Size' option.

1.4. Added New Color Scheme

More4Apps has implemented a new color scheme, see below for an example:

Status		Employee					Special Information				Country
Upload Status	Rejection Reason	Employee Number	Contingent Work	Person Id	Last Name	First Name	Update Mode	Person Analysis	Start Date	End Date	Segment1
Default Values											
Loaded							Create	26738	40312		Taiwan
Loaded							Create	26739	40313		Thailand
Loaded		408		4430	Hawkins	Harold	Create	26740	40314	40543	China
Invalid	Country; Invalid va	1881		27754	Hoi	Sunyi	Create		40315		Hong KG
Invalid	Segment3 cannot	1884		27757	Jimenez	Paul	Create		40318		Singapore
Rejected	Special Informatio	4		5	Walker	Kenneth	Create		40322		Hong Kong
Loaded		8		9	Connors	Timothy	Create	27732	24/05/2010		Hong Kong