



More4apps

Functional Impact Document

Element Entry Wizard

Created By: More4apps

Creation Date: 14 March 2019

Version: 5.0

Version Date: 14 July 2021

Contents

Release 4.4.10 – 14/07/2021	3
Release 4.3.06 – 14/10/2020	3
Release 4.3.03 – 08/06/2020	4
1.1. Added New Color Scheme	4
Release 4.2.14 – 14/11/2019	5
1.1. Added 'Manage Queries' buttons to the Custom Query ribbon.....	5
1.2. New Color Scheme.....	6
Release 4.2.08 - 26/03/2019	6
1.1. Added 'Logging' and 'Help' buttons to the product ribbon.....	7
1.2. Added checkbox 'Allow Pop-Ups' to the Login form.....	7
1.3. Added 'Custom Query' functionality	8
1.4. Added 'End to End Trace Unlimited Size' to Debug Upload option under the Setup Ribbon.....	9
1.5. Added Default Row functionality.....	9
1.6. Added 'Download via sheet' option to Download functionality	11



Release 4.4.10 – 14/07/2021

The following includes details of the incremental fixes, functionality changes and/or additions to the Element Entry Wizard as part of its development and release process.

Whilst we at More4apps have tried to maintain the same look and user interaction, some functionality has been modified. You can still use your current template worksheets in the new version, provided they were created in version 4.2.14 or later. We have implemented a new color scheme in version 4.3.03 of the Wizard so whilst you **can** use your previous template/worksheets in this version, we recommend that your templates are updated to incorporate the new color scheme.

There are no functional changes in this version.

Release 4.3.06 – 14/10/2020

The following includes details of the incremental fixes, functionality changes and/or additions to the Element Entry Wizard as part of its development and release process.

Whilst we at More4apps have tried to maintain the same look and user interaction, some functionality has been modified. You can still use your current template worksheets in the new version, provided they were created in version 4.2.14 or later. We have implemented a new color scheme in the previous version of the Wizard so whilst you **can** use your previous template/worksheets in this version, we recommend that your templates are updated to incorporate the new color scheme.

There are no functional changes in this version.



Release 4.3.03 – 08/06/2020

The following includes details of the incremental fixes, functionality changes and/or additions to the Element Entry Wizard as part of its development and release process.

Whilst we at More4apps have tried to maintain the same look and user interaction, some functionality has been modified. You can still use your current template worksheets in the new version, provided they were created in version 4.2.14 or later. We have implemented a new color scheme in this version of the Wizard so whilst you **can** use your previous template/worksheets in this version, we recommend that your templates are updated to incorporate the new color scheme.

For information on the changes, please see below:

1.1. Added New Color Scheme

Version: 4.3.00

Date: 13/03/2020

New More4apps brand applied. This will have no functional impact on users and is purely a cosmetic update.

Existing templates with previous styles will work with this version, please note, however, the colors may change in these sheets when invoking Wizard functionality. See below for an example:

Batch Name	Element Name	Payroll Name	Effective Date	Effective Char	Action If Exists	Reject if Future Change	Reject After Trans	Batch Source	Batch ID	
LIFE_20190101	Life		06/02/2019	U	U	Y	N		121880	
Element Entry Wizard										
Upload Results					Element Lines					
Batch Line Status	Rejection Reason	Line Number	Object Version	Lin	Employee Name	Employee Number	Assignment Number	Assignment Id	Entry Reason	Costing
Default Values										
Processed		129771	4		Lieberman, Mr.	197	197	1314	Eligible	
Deleted					Able, Ms.	253	253	2302		
Rejected	Fatal: An entry	129773	3		Sanderson, Mr.	122	122	262		
Processed		129774	3		Ryan, Mr.		254			
Processed		135791	4		Dilinger, Mr. Tim	1014	1014	8981	Eligible	

Release 4.2.14 – 14/11/2019

The following includes details of the incremental fixes, functionality changes and or additions to the Element Entry Wizard as part of its development and release process.

Whilst we at More4Apps have tried to maintain the same look and user interaction, some functionality has been modified. We have changed the color scheme of the Wizard so whilst you **can** use your previous template/worksheets in this version, we recommend that you setup your templates again to incorporate the new color scheme included in this version.

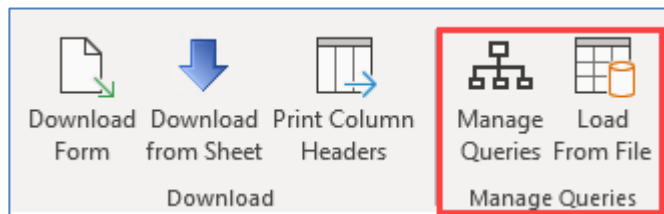
There are no changes to the Element Entry Wizard packages.

For information on the changes, please see below.

1.1. Added 'Manage Queries' buttons to the Custom Query ribbon

Version: 4.2.11

Date: 10/10/2019



Manage Queries: This option will give you access to the Manage Query window where you can create, modify and delete SQL queries and responsibility access to query sets.

Load from File: This option will import xml query set data contained in selected worksheet cells into the instance you are connected to. This feature is useful when writing custom Query Sets in one instance and then needing to copy these across to other instances.

To achieve this simply use the 'Export Queries' feature in the Custom Query 'Edit Queries Using Form' to copy the xml definitions into your current worksheet.

Then login to a different instance, select the cells containing the downloaded query sets and click the 'Load From File' button to import them into the current instance.

1.2. New Color Scheme

Version: 4.2.09

Date: 07/07/2019

More4Apps has implemented a new color scheme, see below for an example:

Batch Name	Element Name	Payroll Name	Effective Date	Effective Char	Action If Exists	ject if Future Change	ge After Trans	Batch Source	Batch ID	Object Version No
LIFE_20190101	Life		06/02/2019	U	U	Y	N		121880	3
Upload Results		Element Lines								
Batch Line Status	Rejection Reason	Line Number	Object Version Lin	Employee Name	Employee Number	Assignment Number	Assignment Id	Entry Reason	Costing	Payee
Default Values										
Processed	Fatal: An entry	129771	4	Lieberman, Mr.	197	197	1314	Eligible		
Deleted				Able, Ms.	253	253	2302			
Rejected		129773	3	Sanderson, Mr.	122	122	262			
Processed		129774	3	Ryan, Mr.		254				
Processed		135791	4	Dilinger, Mr. Tim	1014	1014	8981	Eligible		

Release 4.2.08 - 26/03/2019

The following includes details of the incremental fixes, functionality changes and or additions to the Element Entry Wizard as part of its development and release process.

Whilst we at More4Apps have tried to maintain the same look and user interaction, some functionality has been modified. You **can** use your previous template/worksheets in this new version. However, please note that we've added **Default Values** row 10 in this version, therefore, we recommend changing your existing worksheet row 10 to 'Default Values' or use a new worksheet generated from the new version.

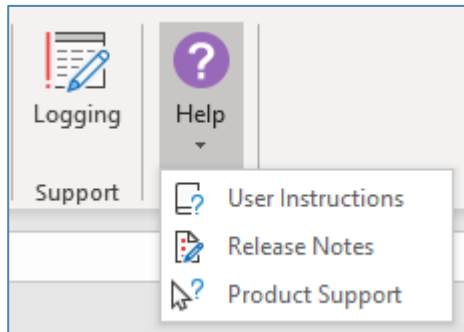
There are no changes to the Element Entry Wizard packages.

For information on the changes, please see below.

1.1. Added 'Logging' and 'Help' buttons to the product ribbon

Version: 4.2.02

Date: 14/03/2019

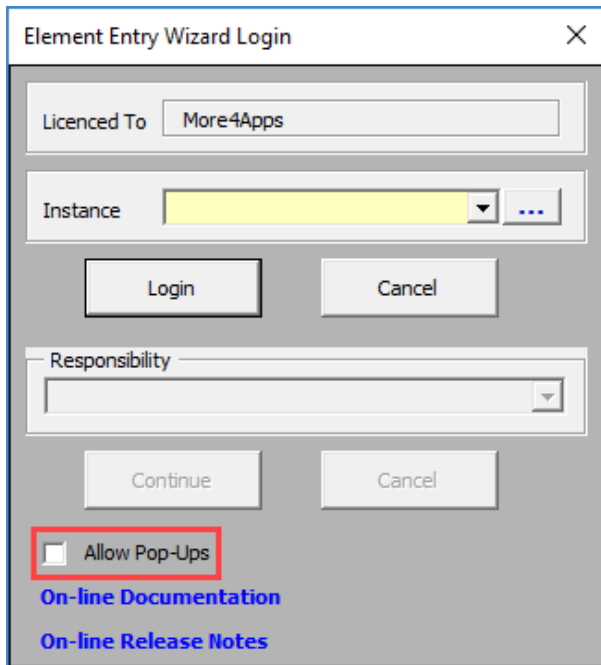


Logging: When you click this button, it will turn on the diagnostics, which will change the button to a grey color. When you want to turn it off just click the button again, the button will change it back to normal and turn off the diagnostics.

Help: This button has three options:

- User Instructions – Link to the More4Apps online User guide for Element Entry Wizard.
- Release Notes – Link to the list of all version releases for the Wizard.
- Product Support – Link to the More4Apps support page where issues/requests can be logged by completing the form details.

1.2. Added checkbox 'Allow Pop-Ups' to the Login form

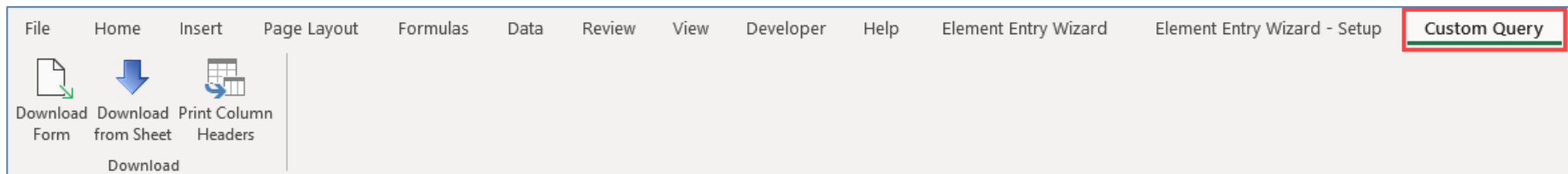


This checkbox enables users that require popups as a part of their login process, to log in to their Oracle instance through the Wizard.

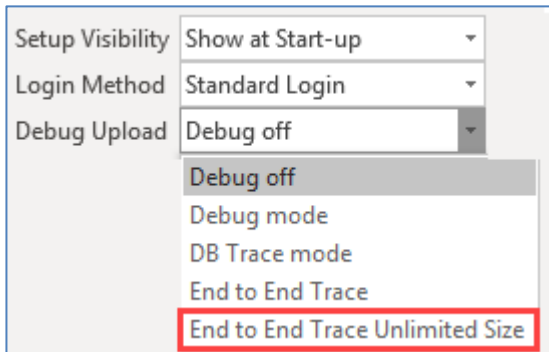
Note: If the user does not require any additional popup dialogues as a part of their login process through the Wizard, this checkbox can remain unchecked.

1.3. Added 'Custom Query' functionality

This feature allows users to create, manage and download user-defined queries directly into Microsoft Excel. For further details, refer to [Custom Query Add-in](#)



1.4. Added 'End to End Trace Unlimited Size' to Debug Upload option under the Setup Ribbon



This option allows the maximum size of trace files created whilst debugging to become unlimited. This resolves the scenario when trace files are too large that they were being truncated. A message box will be displayed when this option is chosen allowing the user to cancel and not set the trace off:

Note: Please only use this under More4Apps advice. A very large trace file may be created. If you are unsure, please use the 'End to End Trace' option rather than the 'End to End Trace Unlimited Size' option.

1.5. Added Default Row functionality

Version: 4.2.00

Date: 14/02/2019

Use the Default Values row on the sheet to enter values to be applied to the lines below.

Upload Results		Element Lines			
Batch Line Status	Rejection Reason	Line Number	Object Version Lin	Employee Name	Employee Number
Default Values					

Row 10 of the Wizard is reserved for Default Values. Any data rows below Row 10 will be populated with default values if they are blank. This occurs when validation is initiated on the worksheet and when the data entry form is opened.

Any values that exist in the Default Values (Row 10) where the column is hidden, will default to your data entry rows.

Standard validation will apply if the defaulted value is not valid for the field.

Warning: Row 10 will now always work as a defaulting row. If you use older Element Entry Worksheets in this new version any data entered in Row10, irrespective of the row formatting, will default into blank cells in Row 11 and down.

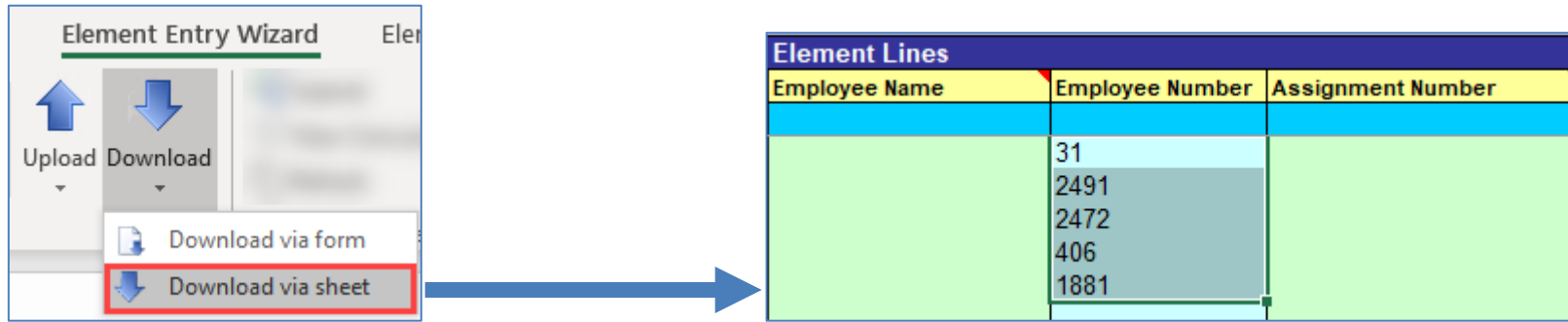
Example use: Enter Default Values for columns 'Entry Reason' and 'Subpriority'. Leave the columns blank for some of the rows below Default Values row and upload. Blank values are populated with default values.

Upload Results	Element Lines								
Batch Line Status	Rejection Reason	Line Number	Object Version Lin	Employee Name	Employee Number	Assignment Number	Assignment Id	Entry Reason	Subpriority
Default Values								Cost of Living	103
Processed		94036	5	Frost, Mr. Jamie	31	31	32	Cost of Living	103
Processed		94037	5	Gooch, Mr. Steven	2491	2491	34463	Cost of Living	103
Processed		94038	5	Hall, Mr. John	2472	2472	34422	Promotion	10319
Processed		94039	5	Hamilton, Ms. Claudia	406	406	4065	Cost of Living	103
Processed		94040	5	Hoi, Ms. Sunyi	1881	1881	27900	Cost of Living	103

1.6. Added 'Download via sheet' option to Download functionality

Version: 4.1.26

Date: 14/02/2019

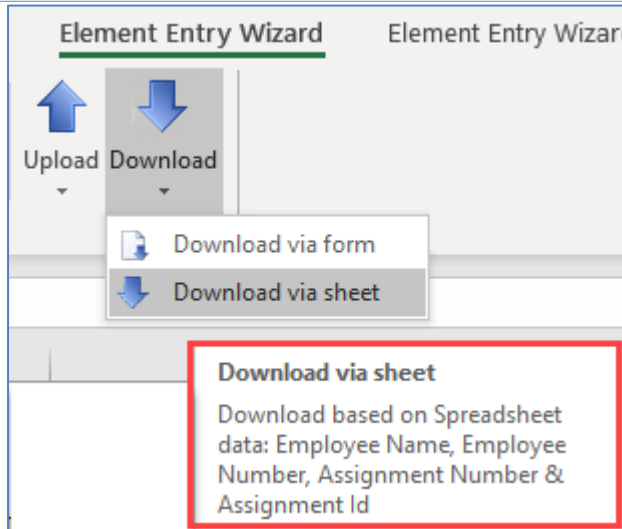


The screenshot shows the 'Element Entry Wizard' interface. On the left, there are 'Upload' and 'Download' buttons. Below them, a dropdown menu is open, showing 'Download via form' and 'Download via sheet'. The 'Download via sheet' option is highlighted with a red box. A blue arrow points from this option to a table titled 'Element Lines'.

Element Lines		
Employee Name	Employee Number	Assignment Number
	31	
	2491	
	2472	
	406	
	1881	

Example use: Enter existing Employee Numbers to sheet, highlight the rows and select 'Download via sheet' from Download to download employee details that belong to the Employee Numbers on the sheet.

1.6. Added 'Download via sheet' option to Download functionality



Download via sheet tooltip: Hover your mouse pointer over the 'Download via sheet' option, and a list of columns you can use to download data back to the sheet will appear. You may enter data in one or more of the columns on the list as criteria for download.